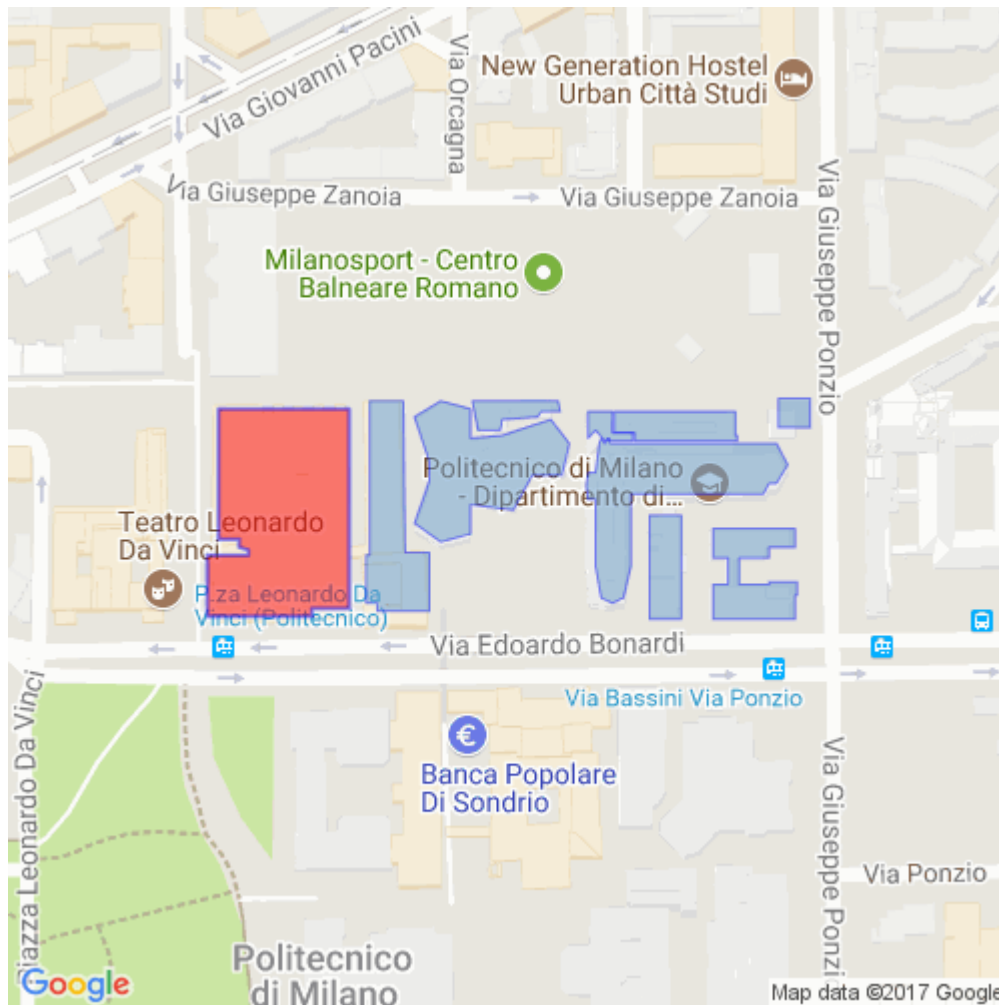


How to reach the classroom A

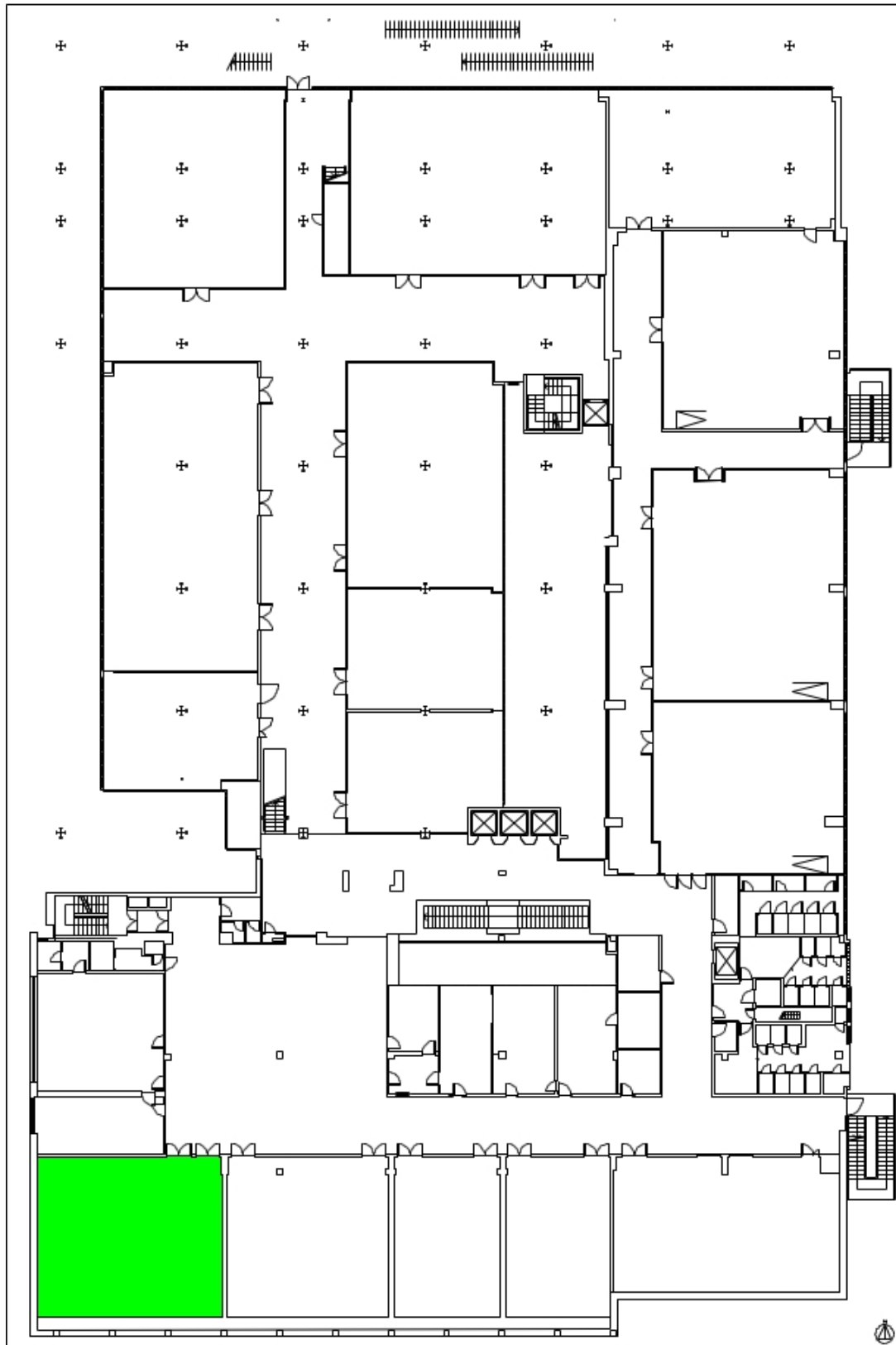
Milano - Milano Città Studi - Via Bonardi - Edificio 11 - Floor: Primo



- Milano Cadorna Station** Take Line 2 of the underground railway (MM2 green line), towards Cologno Nord / Gessate as far as PIOLA station (eighth stop). Continue on foot, taking the left-hand exit from Piola station; take the first street on the left (via Compagni) and then the second on the right (via Ampère). There you will find the entrance to the School of Architecture on the left.
- Milano Centrale Station** Take Line 2 of the underground railway (MM2 green line), towards Cologno Nord / Gessate as far as PIOLA station (third stop). Continue on foot, taking the left-hand exit from Piola station; take the first street on the left (via Compagni) and then the second on the right (via Ampère). At the end of via Ampère, turn left and continue along via Bonardi; at the traffic light, turn left into via Ponzio. You will find the entrance to the Politecnico on the left.
- Piola Station (MM2 green line)** On foot, take the left-hand exit from Piola underground railway station; take the first street on the left (via Compagni) and then the second on the right (via Ampère). There you will find the entrance to the School of Architecture on the left.
- Milano Lambrate Station** Take Line 2 of the underground railway (MM2 green line) towards Abbiategrasso as far as PIOLA station (first stop). Continue on foot, taking the left-hand exit from Piola station; take the first street on the left (via Compagni) and then the second on the right (via Ampère). There you will find the entrance to the School of Architecture on the left.

Classroom A

Floor map



via BONARDI